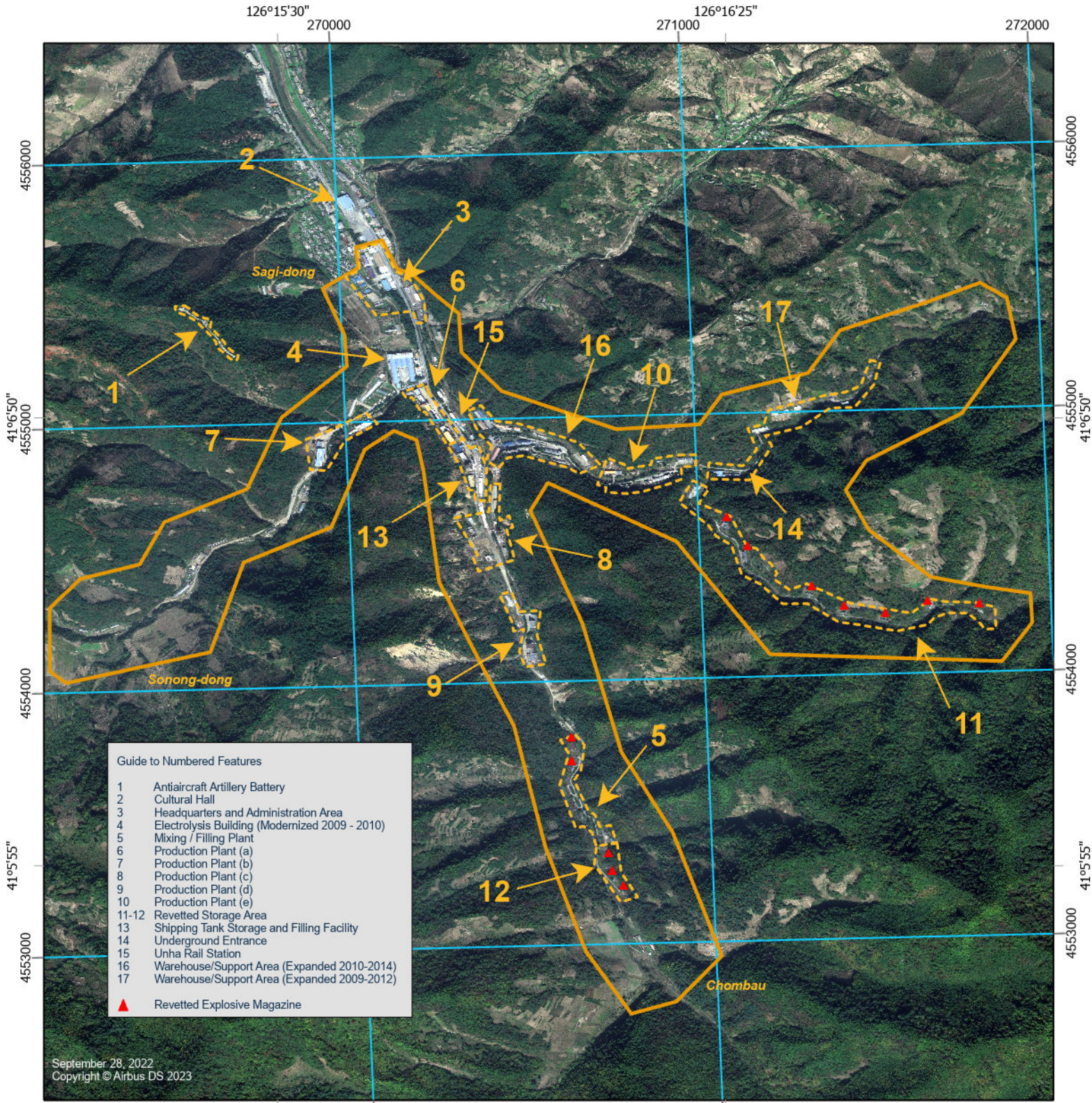


MANPO UNHA FACTORY

만포은하공장



Guide to Numbered Features	
1	Antiaircraft Artillery Battery
2	Cultural Hall
3	Headquarters and Administration Area
4	Electrolysis Building (Modernized 2009 - 2010)
5	Mixing / Filling Plant
6	Production Plant (a)
7	Production Plant (b)
8	Production Plant (c)
9	Production Plant (d)
10	Production Plant (e)
11-12	Revetted Storage Area
13	Shipping Tank Storage and Filling Facility
14	Underground Entrance
15	Unha Rail Station
16	Warehouse/Support Area (Expanded 2010-2014)
17	Warehouse/Support Area (Expanded 2009-2012)
▲	Revetted Explosive Magazine

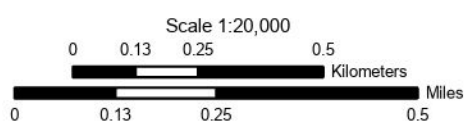
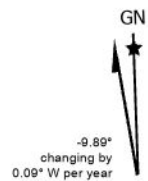
September 28, 2022
Copyright © Airbus DS 2023

EDITION CSIS 1

LOCATION:
Manpo Unha Factory,
Chagang-do Province,
North Korea

COORDINATES:
41.115706 126.262207

DATE OF IMAGERY:
September 28, 2022
Copyright © Airbus DS 2023



Map Not Intended for Navigational Purposes
Ellipsoid ——— WGS 84
Grid ——— 1000 meter UTM Zone 52N

